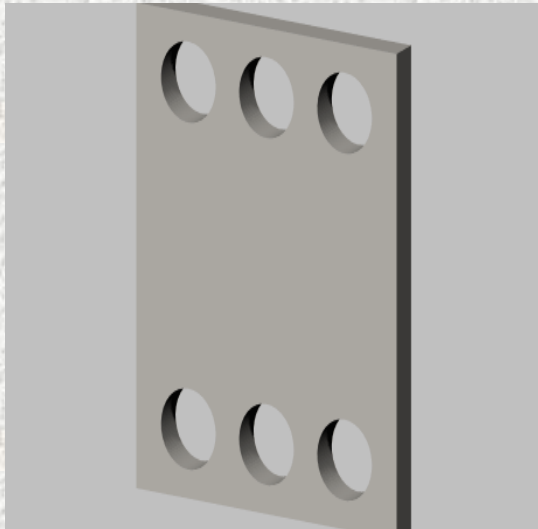


# METRIC FITTING SPACERS 6- HOLE



**ELECTROETCH DIM A ON EDGE OF SPACER**

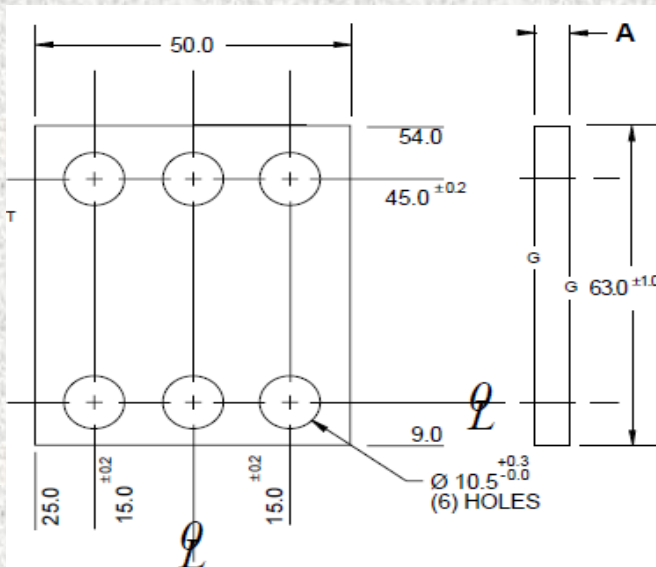
**ALL DIMENSIONS**

**BLACK OXIDE FINISH**

**SURFACES TO BE FLAT AND PARALLEL TO**

**WITHIN 0.015 mm.**

**MATERIAL: SAE 1020**



CODE	A
ASP630	3.00
ASP632	3.20
ASP634	3.40
ASP636	3.60
ASP638	3.80
ASP640	4.00
ASP642	4.20
ASP644	4.40
ASP646	4.60
ASP648	4.80
ASP650	5.00
ASP652	5.20
ASP654	5.40
ASP656	5.60
ASP658	5.80
ASP660	6.00
ASP662	6.20
ASP664	6.40
ASP666	6.60
ASP668	6.80
ASP670	7.00

## 1. ESPECIFICACIONES .

1.1 SUPERFICIES PLANAS, PARALELAS Y PERPENDICULARES  
CON UNA TOLERANCIA DE 0.015MM.

1.2 ACABADO EN LA SUPERFICIE : PAVONADO

1.3 IDENTIFICAR CON EL CODIGO DEL PRODUCTO

## 2. TOLERANCIAS DIMENSIONALES

1 DIGITO +- 0.3 2 DIGITOS +- 0.03 3 DIGITOS +-0.015

